



G DATA

TechPaper #0253

G DATA MailSecurity & Microsoft Exchange Server

2013

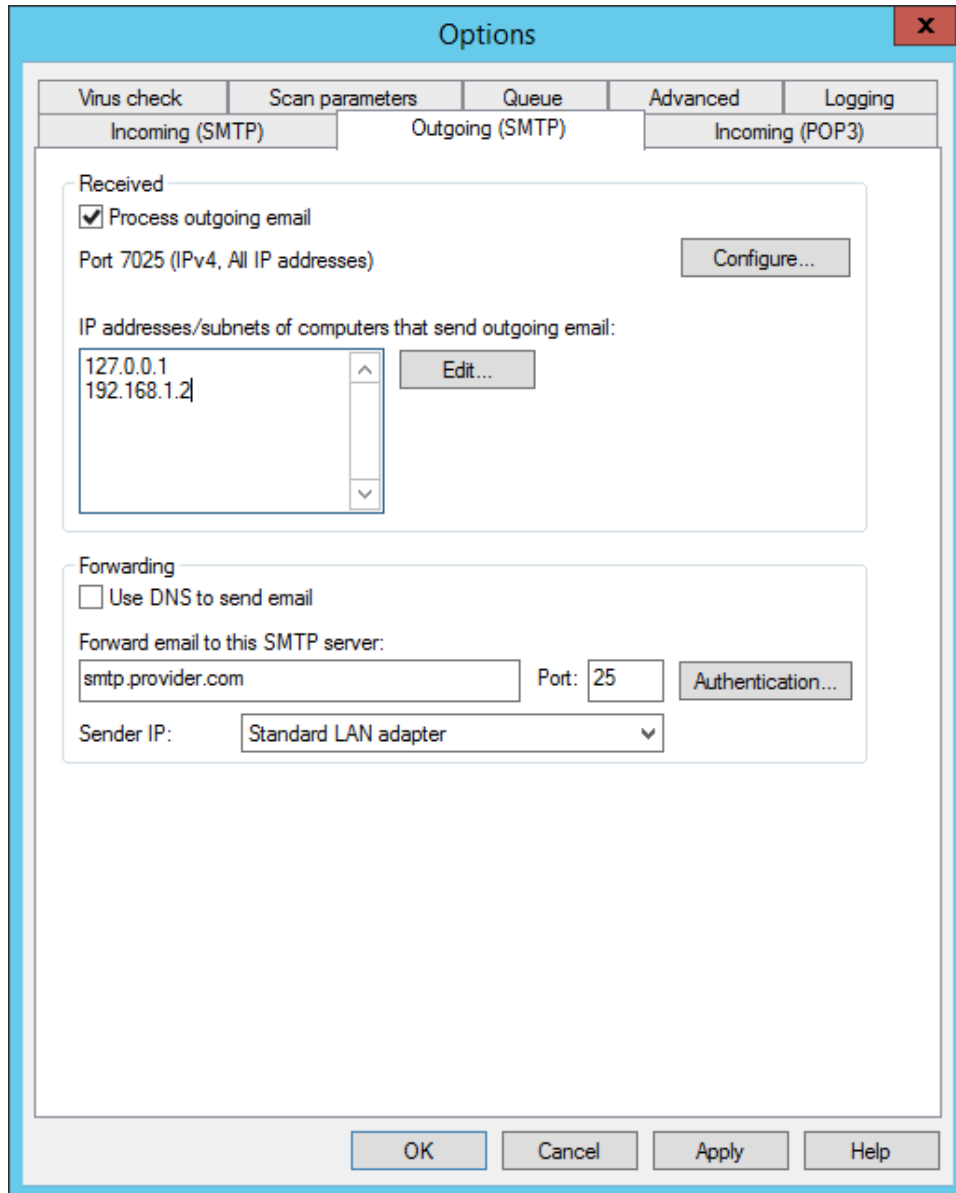
G DATA Serviceteam



Contents

G Data MailSecurity on Microsoft® Exchange™ 2013.....	4
1. Prior to installation	4
2. Installing MailSecurity	4
3. Exchange 2013 configuration.....	5
a) Sending emails through SMTP	5
b) Changing Ports	9
c) Receiving emails through SMTP.....	11
d) Receiving emails through POP3	13
4. Configuring MailSecurity.....	14
a) Incoming settings (SMTP)	14

b) Outgoing settings (SMTP)



..... 16

c) Incoming settings (POP3)..... 17

d) Querying multiple POP3 servers..... 18

G Data MailSecurity on Microsoft ® Exchange™ 2013

To send and receive emails using G DATA MailSecurity, the SMTP and POP3 servers IP will have to be redirected to the MailSecurity PC.

This redirection is only necessary when G DATA MailSecurity is installed on the same machine as the Mailserver.

1. Prior to installation

Please make sure prior to installation that:

- Any AV software which was used previously is thoroughly removed from the system and the registry. It is recommended to use the cleaning / removal tool provided by the vendor of the previously used AV solution.
- All important windows updates and especially service packs have been installed.
- The contents of all TEMP folders have been deleted

2. Installing MailSecurity

Make sure to only install the latest available version of the software. The latest setup file can be requested from our support team (mailto: business-support@gdata.de) or directly downloaded from our partner web:

<https://partnerweb.gdatasoftware.com/>

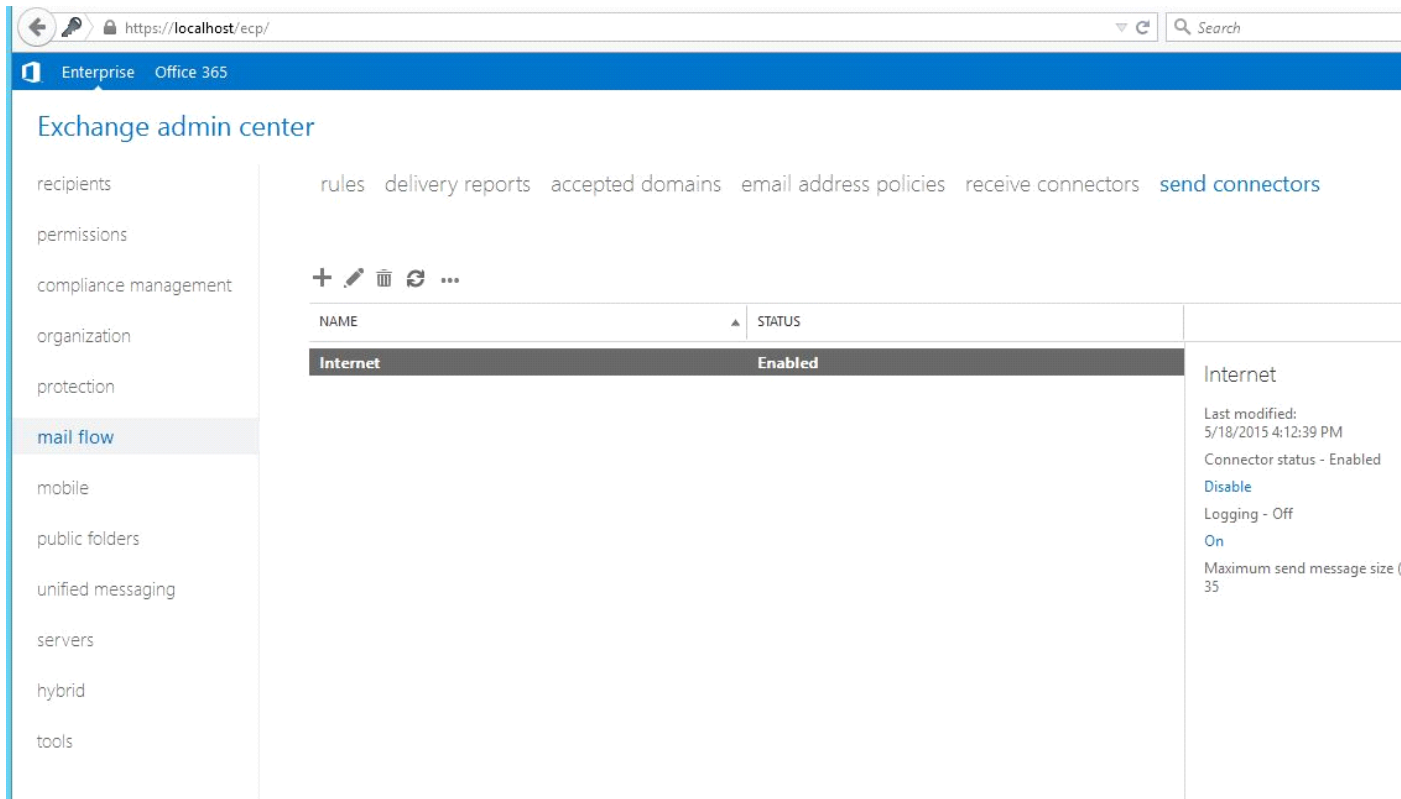
3. Exchange 2013 configuration

a) Sending emails through SMTP

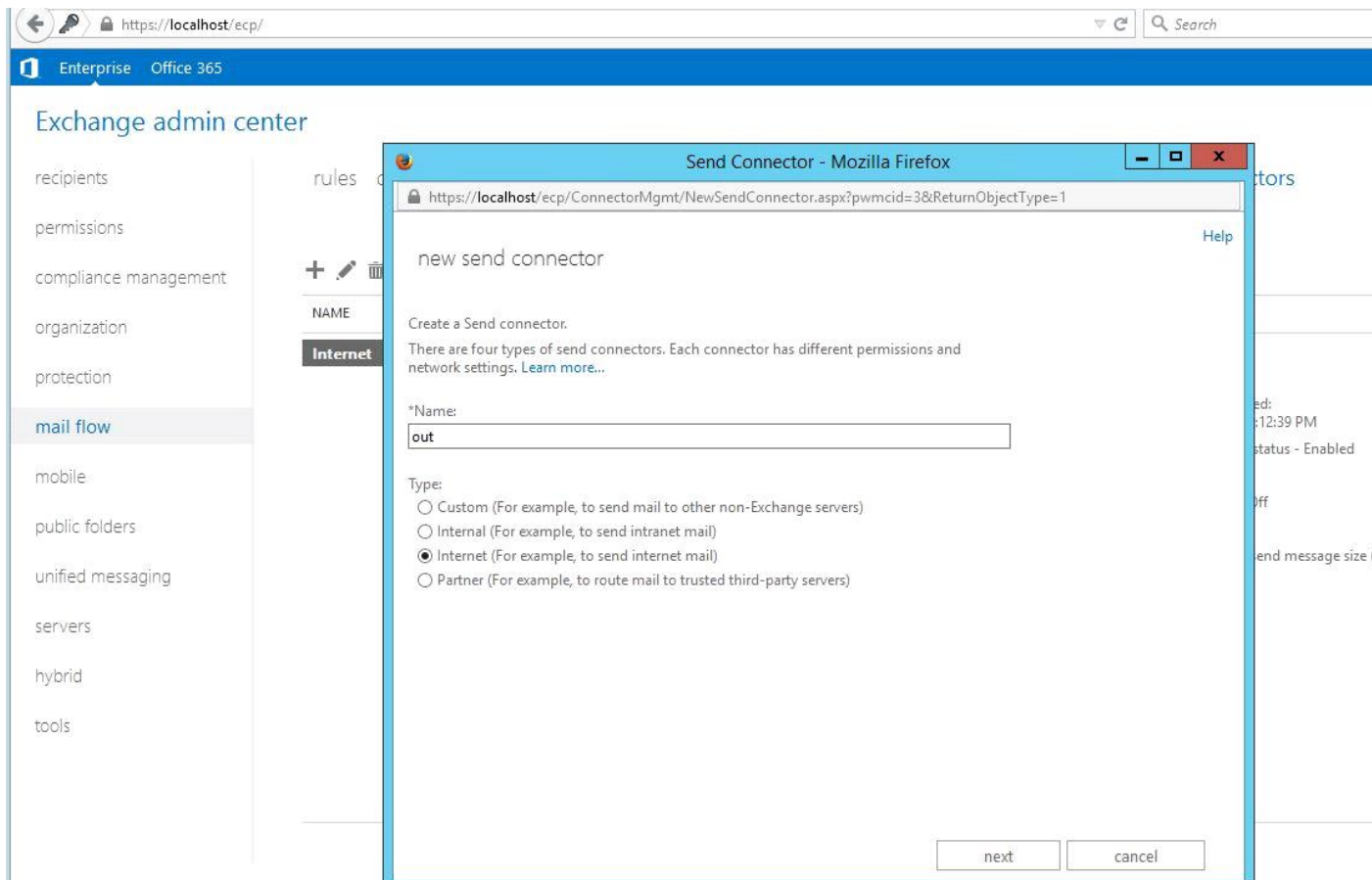
First, a new send connector must be created and the Smart hosts' IP address changed to the G DATA MailSecurity gateway.

Start the Exchange Admin center on <https://localhost/ecp> and open:

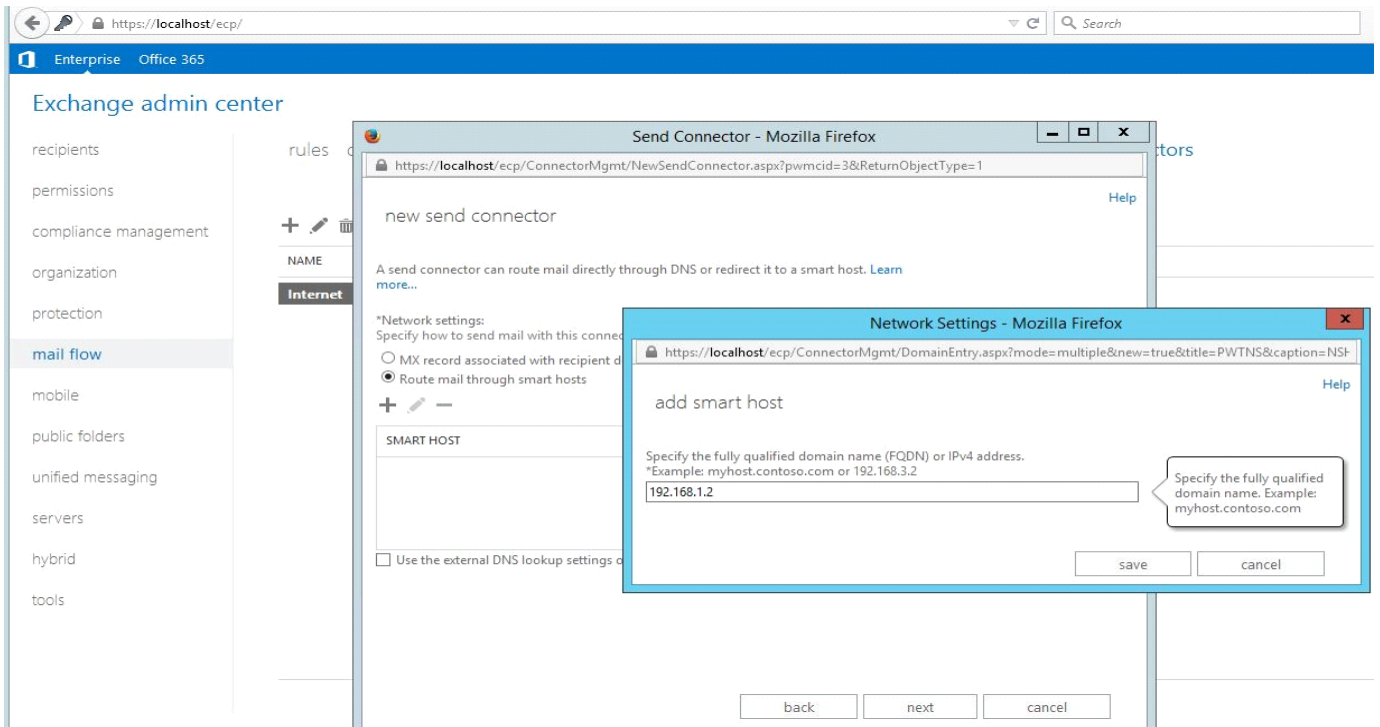
- Mail flow
- Send connectors
- Use "+" to create a new Send connector
- Type "internet"
- Freely choose a name (in the example: "out")
- Network settings "pass on mail through Smarthost"



Screenshot 1: mail flow – Send connectors



Screenshot 2: mail flow – Send connectors – New Send connector



Screenshot 3: mail flow – Send connectors – add smart host

Change the smart hosts to the IP address of the G DATA MailSecurity Gateway. Do not use localhost or 127.0.0.1, but always the local IP address of the server.

Note: in our example, 192.168. 1.2 is the localhost (127.0.0.1).

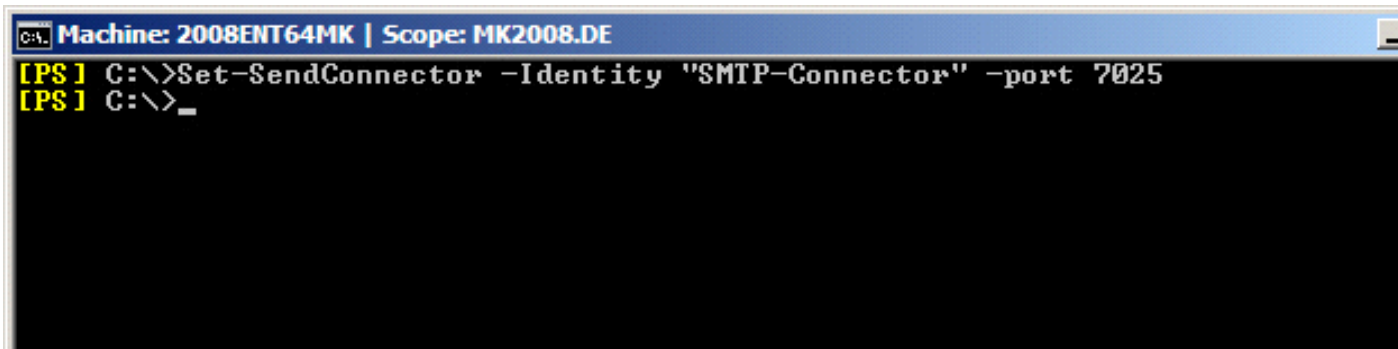
b) Changing Ports

In addition, it is advised to change the outgoing SMTP port from 25 to for example 7025.

This must be done through the Exchange Management Shell.

Open the Exchange Management Shell and enter the following:

```
Set-SendConnector -Identity "SENDCONNECTORNAME" -port 7025
```

A screenshot of a Windows command prompt window titled "Machine: 2008ENT64MK | Scope: MK2008.DE". The prompt shows two lines of text: "[PS] C:\>Set-SendConnector -Identity "SMTP-Connector" -port 7025" and "[PS] C:\>_". The first line is the command being executed, and the second line is the prompt after the command has been entered.

```
C:\ Machine: 2008ENT64MK | Scope: MK2008.DE
[PS] C:\>Set-SendConnector -Identity "SMTP-Connector" -port 7025
[PS] C:\>_
```

Screenshot 4: change SMTP-Port

Check the changes using the command:

```
Get-SendConnector -Identity "SENDCONNECTORNAME" | fl
```

```
Machine: 2008ENT64MK | Scope: MK2008.DE
[PS] C:\>Get-SendConnector -Identity "SMTP-Connector" | fl

AddressSpaces           : <SMTP:*;1>
AuthenticationCredential :
Comment                 :
ConnectedDomains        : <>
ConnectionInactivityTimeout : 00:10:00
DNSRoutingEnabled       : False
DomainSecureEnabled     : False
Enabled                 : True
ForceHELO               : False
Fqdn                    :
HomeMTA                 : Microsoft MTA
HomeMtaServerId         : 2008ENT64MK
Identity                : SMTP-Connector
IgnoreSTARTTLS          : False
IsScopedConnector       : False
IsSmtpConnector         : True
LinkedReceiveConnector  :
MaxMessageSize          : 10MB
Name                    : SMTP-Connector
Port                    : 7025
ProtocolLoggingLevel    : None
RequireTLS              : False
SmarthostAuthMechanism  : None
Smarthosts              : <[192.168.1.2]>
SmarthostsString        : [192.168.1.2]
SourceIPAddress         : 0.0.0.0
SourceRoutingGroup      : Exchange Routing Group <DWBGZMFD01QNBJR>
SourceTransportServers  : <2008ENT64MK>
UseExternalDNSServersEnabled : False

[PS] C:\>_
```

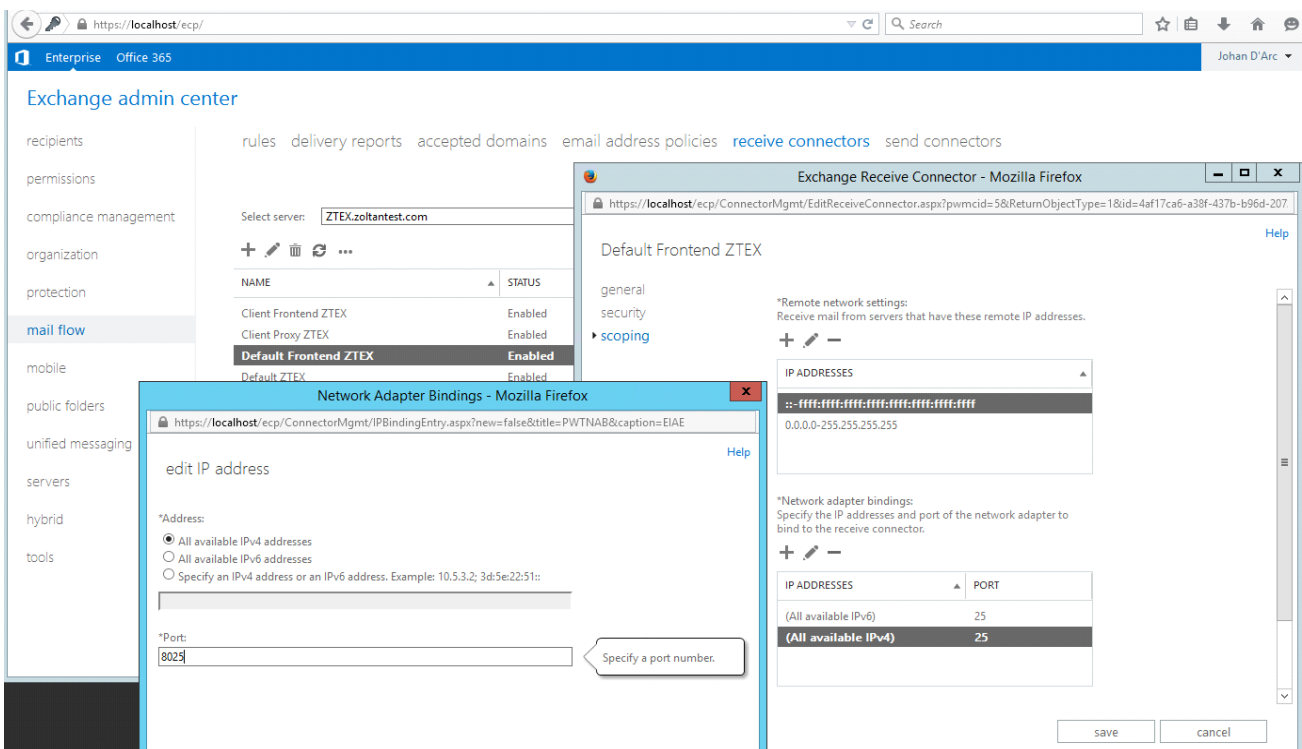
Screenshot 5: checking the new SMTP ports

c) Receiving emails through SMTP

The SMTP port to receive emails must be changed from 25 to for example 8025.

Start the Exchange Admin Center via <https://localhost/ECP> and open:

- Mail flow
- Receive connectors
- Default frontend server name
- Scoping



Screenshot 6: Exchange Receive Connectors

Change the port for all available IPv4 addresses and IPv6 addresses from 25 to for example 8025.

NOTE:

- Restart all Exchange Services to apply the settings otherwise the settings will not be applied.
- Open up the required ports in the firewall.

d) Receiving emails through POP3

In order to receive POP3 emails through MailSecurity, a third party POP3 connector must be used.

Example of an existing account:

Username: Max.Mustermann
Password: *****
Incoming mail server: pop.provider.com
Port: 110

The e-mail accounts of POP connectors must be reconfigured as follows:

Username: John.Doe (unchanged)
Password: ***** (unchanged)
Incoming mail server: 192.168.1.2
Port: 7110

NOTE:

- Restart the Exchange or POP connector services otherwise the settings will not be applied.
- Open up the required ports in the firewall.

4. Configuring MailSecurity

a) Incoming settings (SMTP)

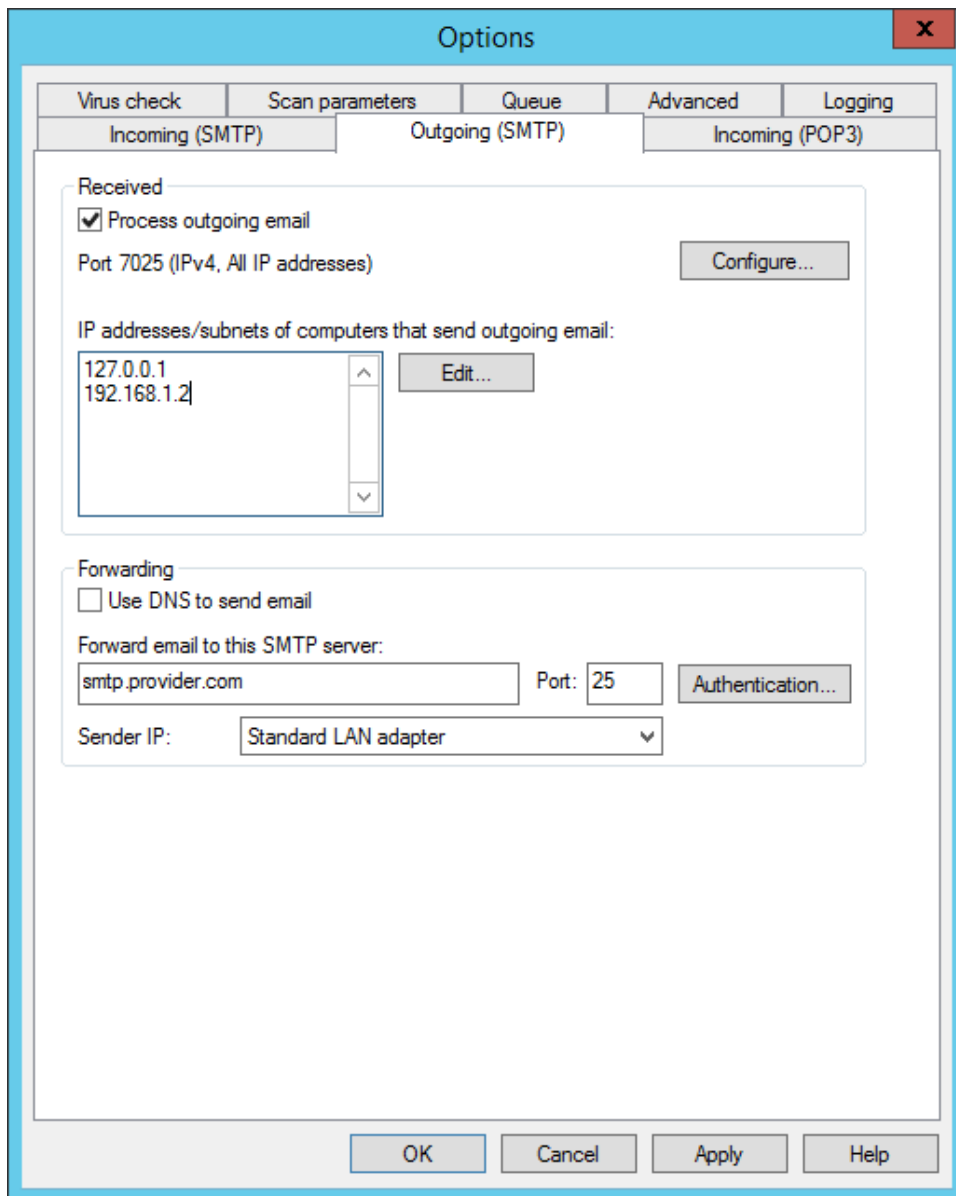
The screenshot shows the 'Options' dialog box for MailSecurity, with the 'Incoming (SMTP)' tab selected. The dialog has a title bar with a close button (X) and a menu bar with 'Virus check', 'Scan parameters', 'Queue', 'Advanced', and 'Logging'. The main content area is divided into three sections: 'Received', 'Forwarding', and 'Protection prior to relaying'. The 'Received' section has a checked checkbox for 'Process incoming email' and a text field for 'Port 25 (IPv4, All IP addresses)' with a 'Configure...' button. The 'Forwarding' section has an unchecked checkbox for 'Use DNS to send email', a text field for 'Forward email to this SMTP server:' containing '192.168.1.2', a 'Port:' field containing '8025', and a 'Sender IP:' dropdown menu set to 'Standard LAN adapter'. The 'Protection prior to relaying' section has a text field for 'Only accept incoming email for the following domains or addresses:' containing 'domain.com', and a list of buttons: 'Add', 'Change', 'Delete', 'Import...', 'Export...', and 'Active Directory...'. At the bottom of the dialog are 'OK', 'Cancel', 'Apply', and 'Help' buttons.

Virus check	Scan parameters	Queue	Advanced	Logging
Incoming (SMTP)		Outgoing (SMTP)	Incoming (POP3)	
Received				
<input checked="" type="checkbox"/> Process incoming email				
Port 25 (IPv4, All IP addresses)				Configure...
Forwarding				
<input type="checkbox"/> Use DNS to send email				
Forward email to this SMTP server:				
192.168.1.2			Port:	8025
Sender IP:		Standard LAN adapter		
Protection prior to relaying				
Only accept incoming email for the following domains or addresses:				
domain.com				Add
				Change
				Delete
				Import...
				Export...
				Active Directory...
OK Cancel Apply Help				

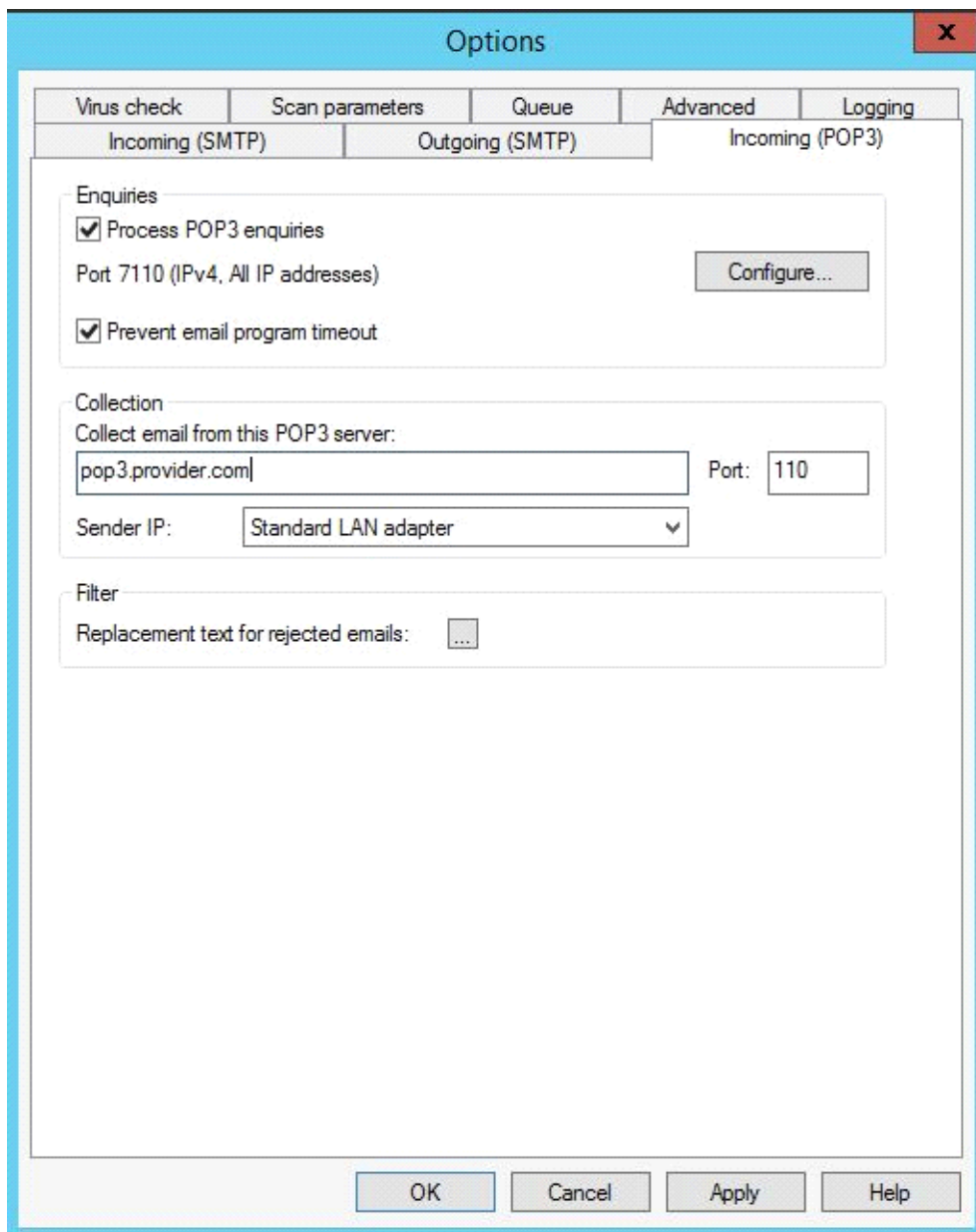
NOTE: Receiving incoming emails via SMTP should be deactivated if emails are only received using POP3.

Open up the required ports in the firewall.

b) Outgoing settings (SMTP)



c) Incoming settings (POP3)



d) Querying multiple POP3 servers

If multiple POP3 servers are to be queried, no POP3 server must be entered in MailSecurity under "Incoming (POP3)". The server name is transmitted via the user name; enter the POP3 server name followed by a colon (":"), then enter the user name.

Example of a user account with different POP3 servers:

Username: pop3.provider.com:John.Doe

Password: ***** (unchanged)

Incoming mail server: 192.168.1.2

Port: 7110